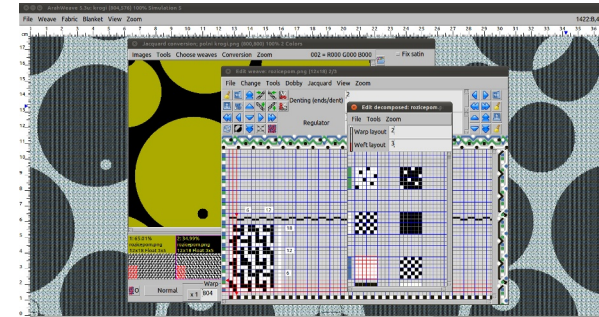




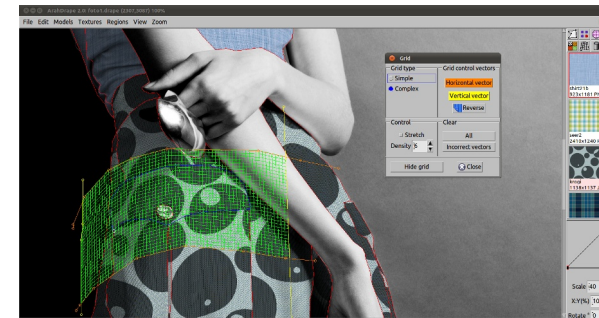
Serving textile industry since 1992

Arahne products

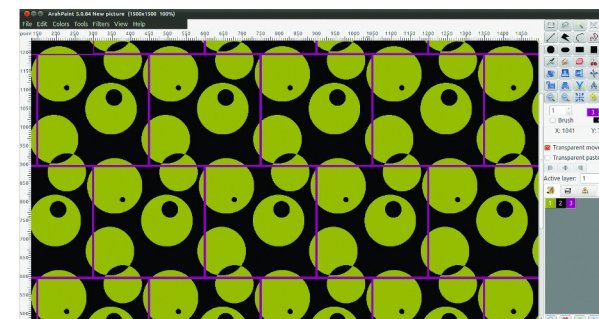
ArahWeave – CAD/CAM for weaving



ArahDrape – Texture mapping



ArahPaint – Drawing in repeat



Why choose ArahWeave CAD?

- Dobby and jacquard integrated in a single product
- All packages include a database of 35.000 weaves
- You get a free version of ArahPaint, powerful pattern-making program for drawing in repeat and in fabric density
- Enables editing of weave, thread pattern, yarns, colors, regulator, denting, variable density...
- Decomposed editing for double fabrics
- Thread pattern generator for making complex thread patterns
- Drawing thread pattern directly on the fabric simulation
- Automatic correction of floats
- Generation of crêpe (sable) weaves
- Export of technical data in html and xml
- Fabric price calculation
- CIE Lab based colorimetry for color matching on different screens and prints
- Simulation of Overprint, Chiné, Ikat, Seersucker, raised finish and wrinkles
- Realistic fabric simulation in actual size
- Fabric cross section view
- Weft blanket for pasting several fabrics together
- Support for exclusive techniques like fil-coupe, extra wefts, transparency and jacquard color shading
- Transformation of jacquard cards into images
- Small files easy to share with [Dropbox](#) Cloud computing
- 3D fabric simulation

Supported textile machinery



STÄUBLI



BONAS



SMIT TEXTILE
weaving excellence



**WEAVING
SULZER TEXTIL™**
ITEMA

SOMET

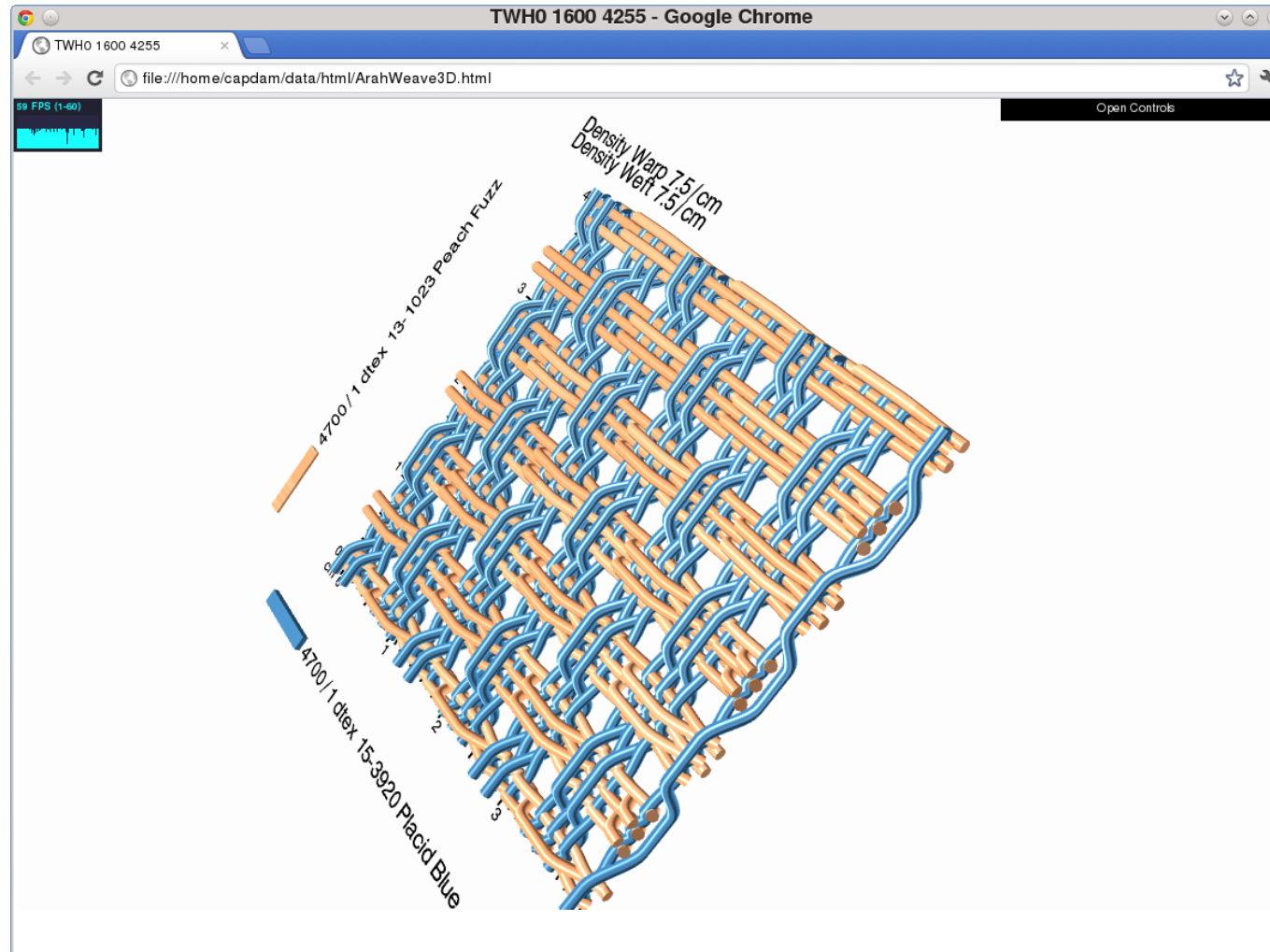


DORNIER



VAMATEX

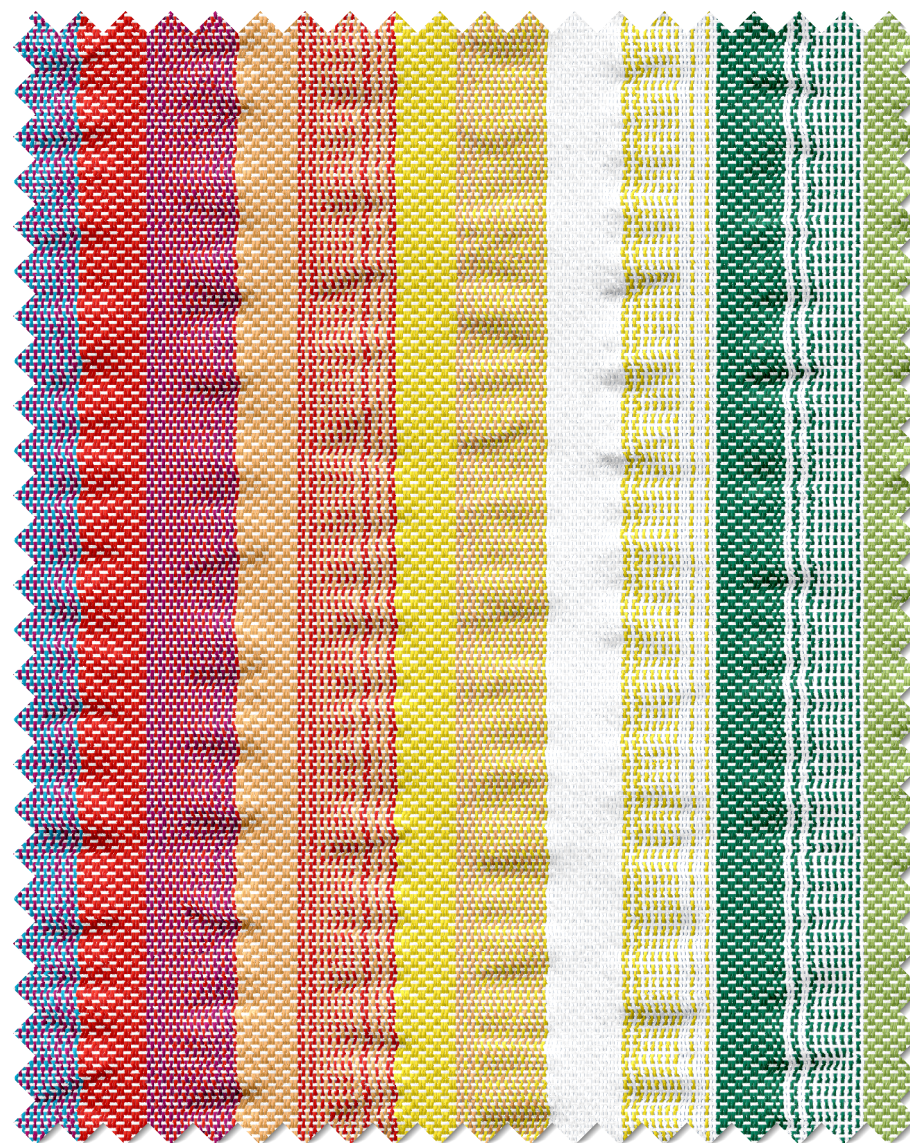
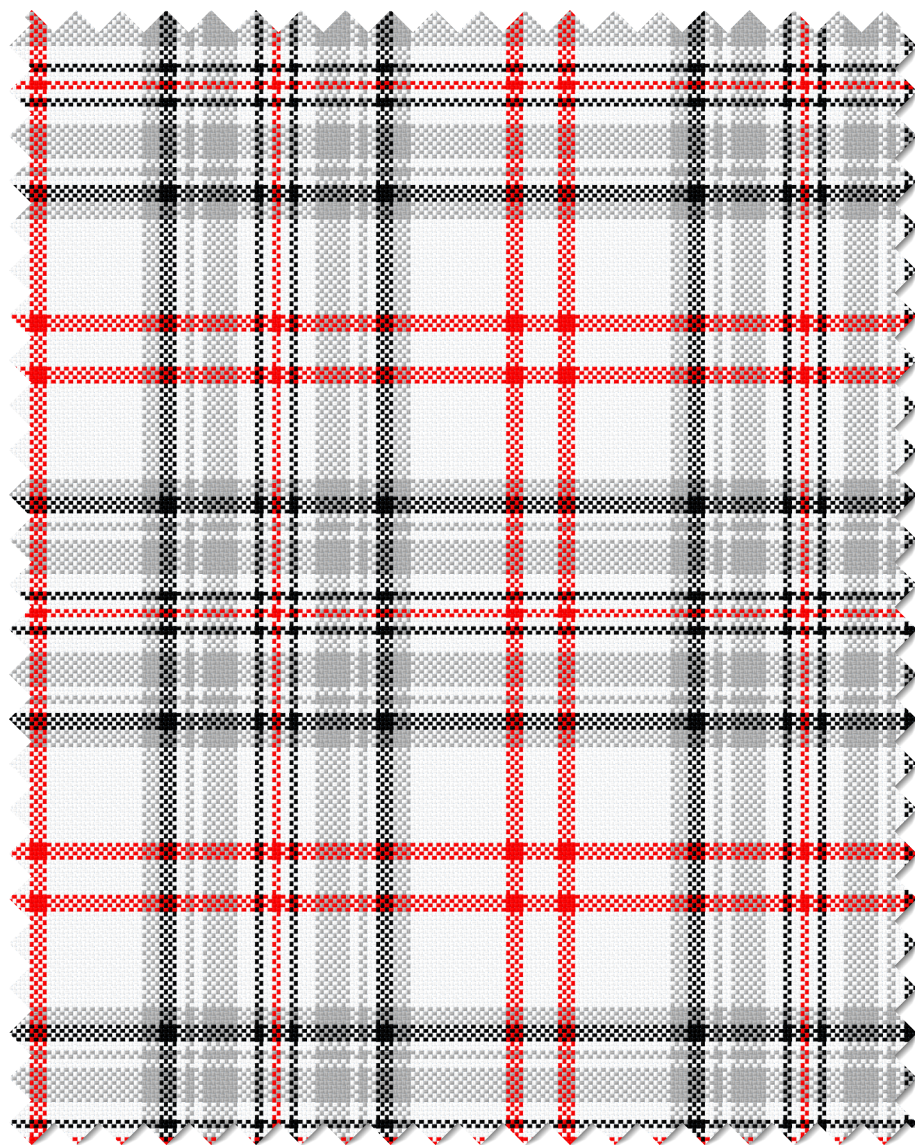
3D fabric simulation



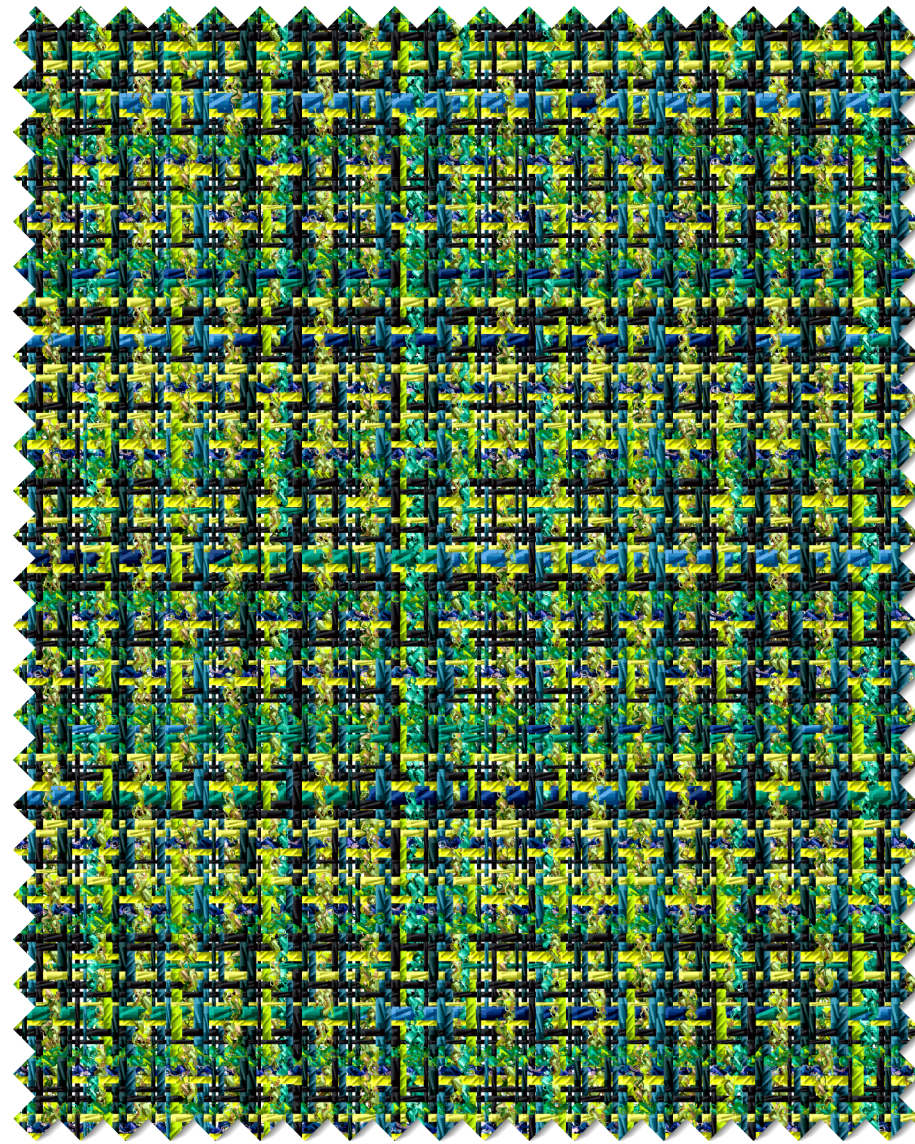
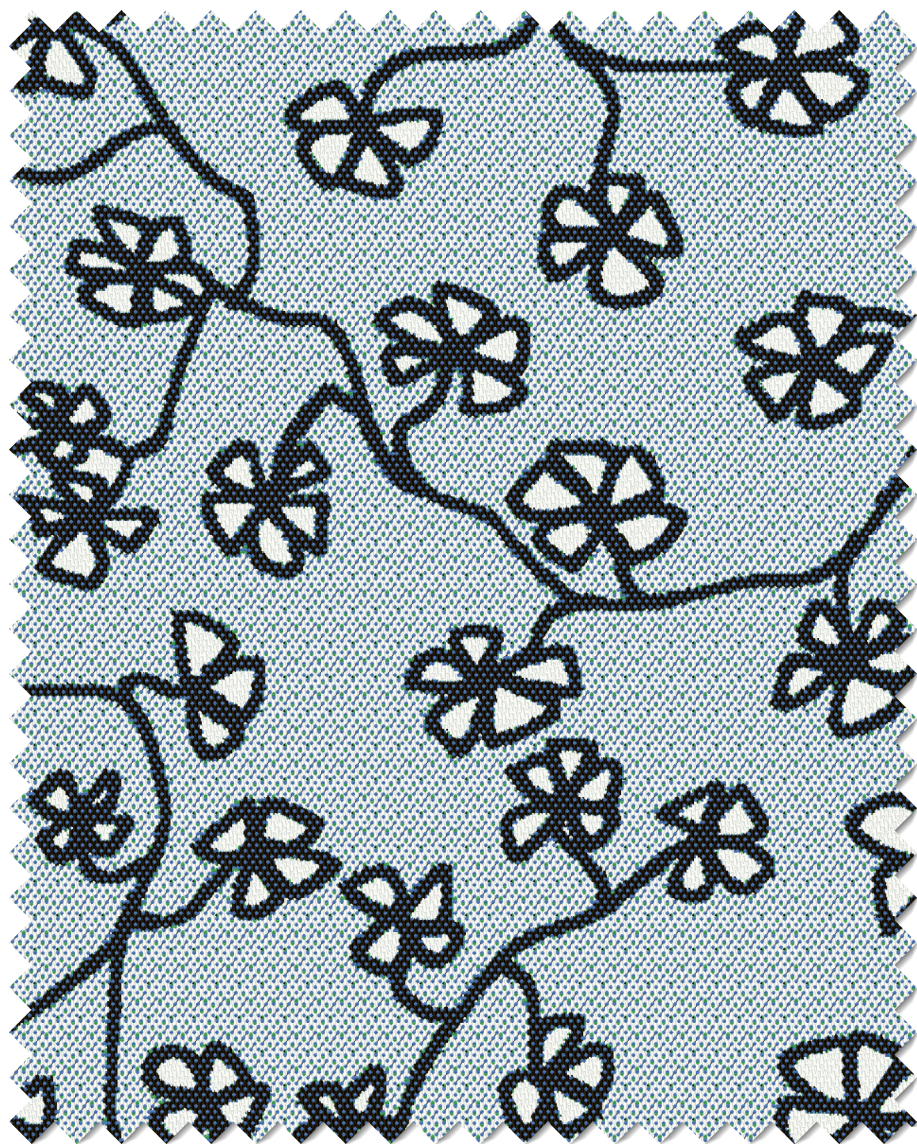
Realistic fabric simulation in real size or close up



Fabric simulation



Fabric simulation



CIE Lab based colorimetry for color matching

Support for PANTONE® TEXTILE

File Sort Change Choose 109

16-1541 Camellia	16-1451 Nasturtium	17-1547 Emberglow	17-1544 Burnt Sienna	17-1553 Paprika	18-1454 Red Clay	18-1555 Molten Lava
17-1663 Bittersweet	17-1664 Poppy Red	18-1660 Tomato	18-1664 Fiery Red	18-1662 Flame Scarlet	18-1763 High Risk Red	18-1550 Aurora Red
18-1652 Rococco Red	18-1661 Tomato Puree	18-1764 Lollipop	18-1761 Ski Patrol	19-1760 Scarlet	19-1764 Lipstick Red	19-1762 Crimson
19-1763 Formula One	18-1655 Mars Red	19-1761 Tango Red	18-1663 Chinese Red	19-1663 Ribbon Red	19-1664 True Red	19-1557 Chili Pepper
14-1714 Quartz Pink	15-1717 Pink Icing	14-1513 Blossom	14-1521 Peaches N' Cream	15-1621 Candlelight Peach	16-1720 Strawberry Ice	16-1626 Peach Blossom
15-1821 Flamingo Pink	16-1723 Confetti	17-1928 Bubblegum	16-1735 Pink Lemonade	17-1930 Camilia Rose	17-1929 Rapture Rose	17-1927 Desert Rose
15-1922 Geranium Pink	15-1624 Conch Shell	15-1626 Salmon Rose	16-1731 Strawberry Pink	17-1736 Sunkist Coral	17-1744 Calypso Coral	16-1620 Tea Rose
17-1753 Geranium	17-1755 Paradise Pink	18-1756 Teaberry	18-1755 Rouge Red	18-1754 Raspberry	17-1842 Azalea	18-1856 Virtual Pink
17-1740 Claret Red	18-1741 Raspberry Wine	18-1852 Rose Red	18-1760 Barberry	18-1945 Bright Rose	19-1860 Persian Red	19-1955 Cerise
13-2806 Pink Lady	14-2710 Lilac Sachet	14-2311 Prism Pink	15-2215 Begonia Pink	15-2718 Fuchsia Pink	15-2214 Rosebloom	17-2520 Ibis Rose

A* B C D E F G H I J K L M N O P Q R S T U V W X Y #

a* b* c* d* e f g h i j k l m n o p q r s t u v w x y #

Edit Overprint

PANTONE® 18-1764 TPX Lollipop

Luminosity 43.45 a 62.54 b 24.25

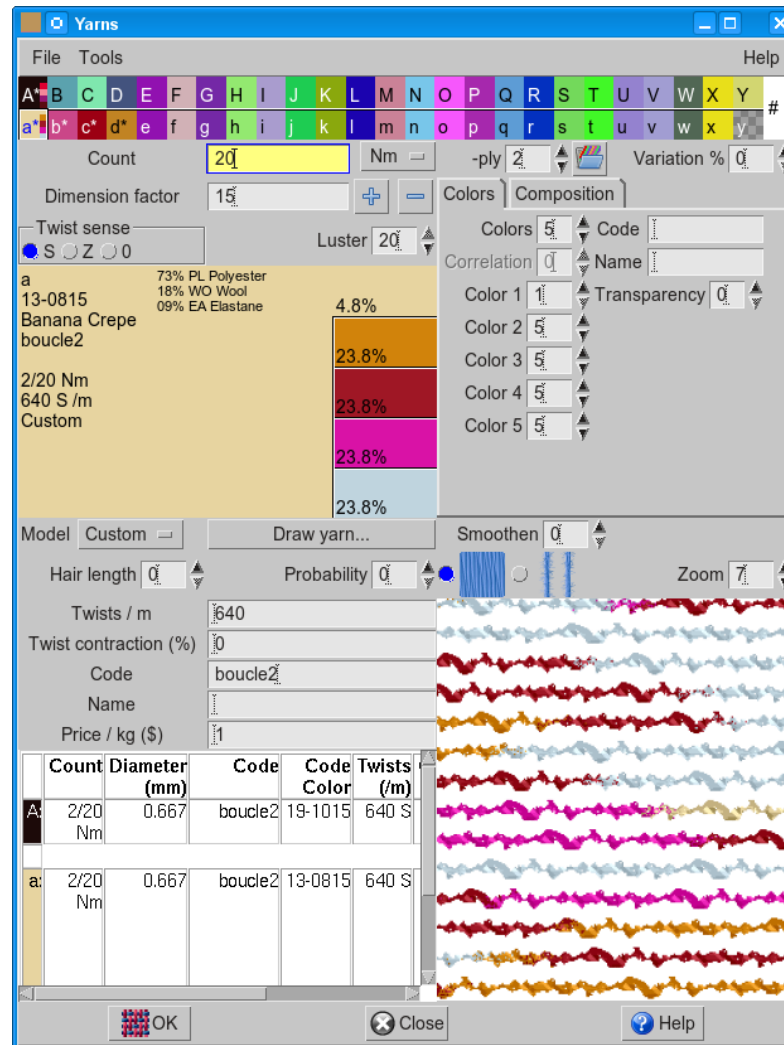
Model
 RGB
 HSL
 CIE Lab
 Printer: 10.20

Match for: (dE)
 Screen: 10.20
 Printer: 10.20

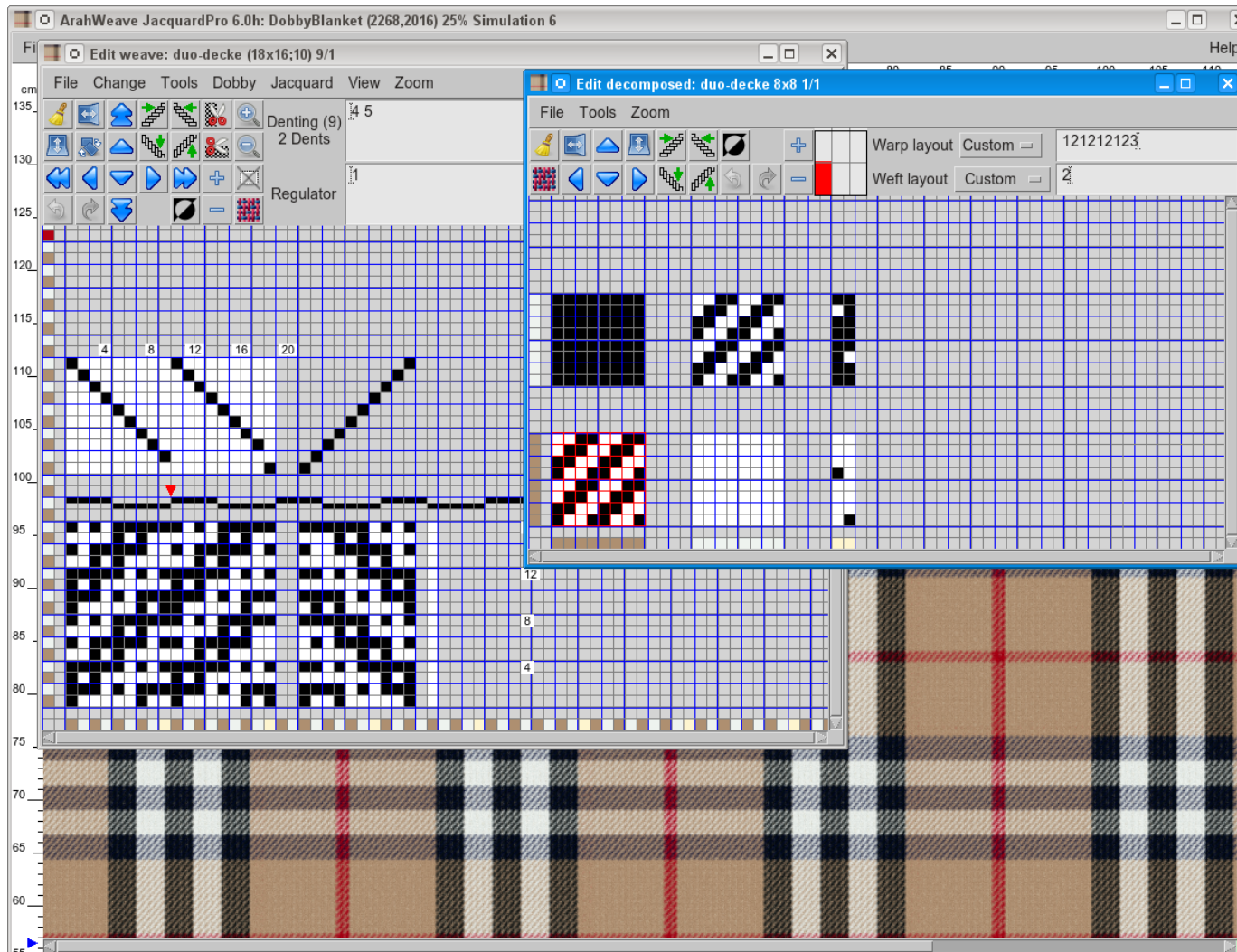
759
PANTONE® 18-1764 TPX
Lollipop
© Pantone, Inc., 2003

OK Close Help

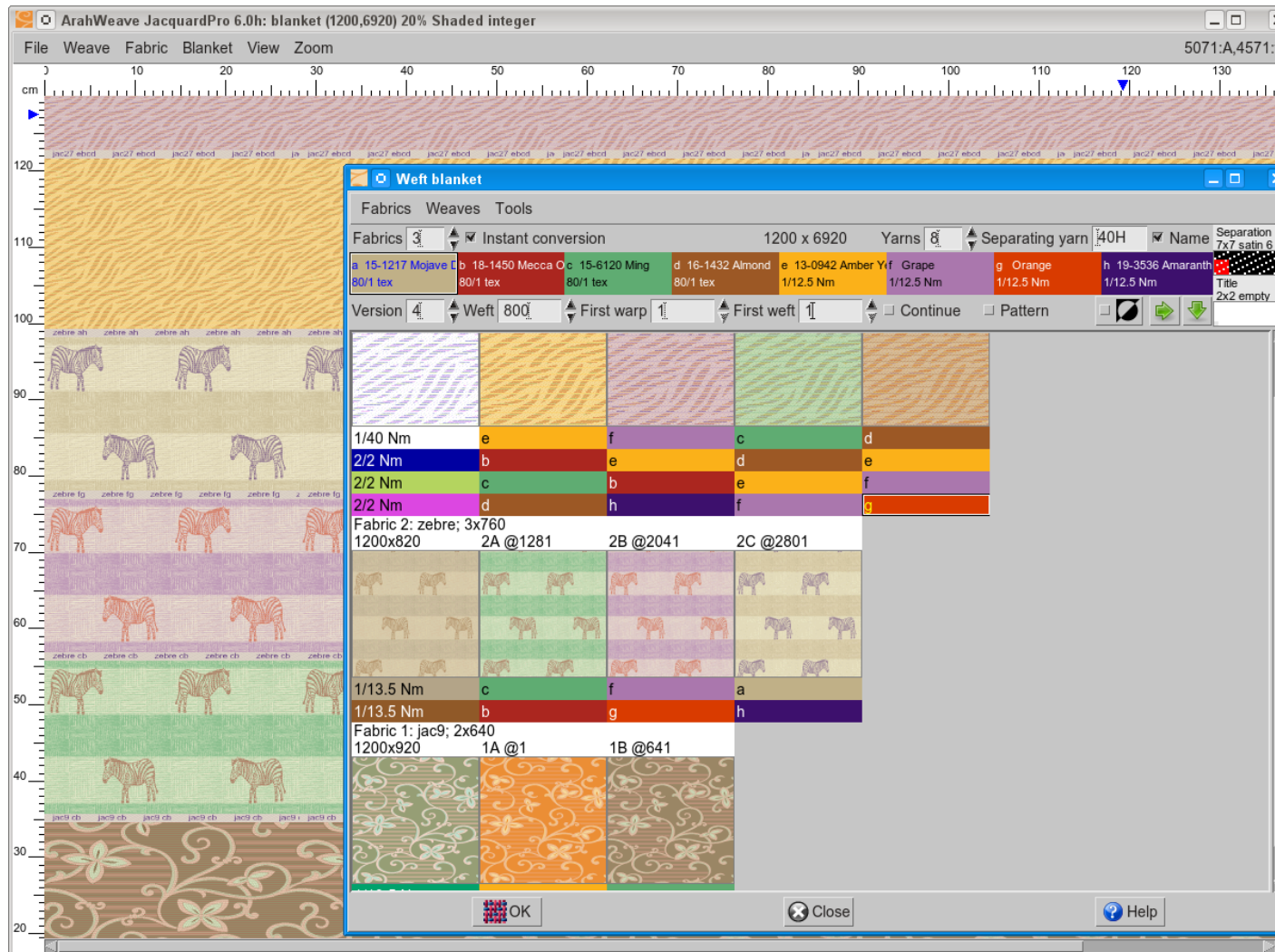
Advanced yarn editor



Multi layer weave editor



Pasting several fabrics together into one file for easier sampling



Fabric technical data calculation, fabric price calculation

Calculation of thread consumption

Threads in fabric width: 2268
 Fabric length (m): 87.75
 Reed number (Dents / 1 cm): 2.8
 Denting (9) 2 Dents: 4 5
 Selvedge denting: 3
 Selvedge dents: 1
 Weft density (threads/1 cm): 12
 Take-up (%): 2.5

Reed width (cm): 180
 Raw width (cm): 165
 Finished width (cm): 150
 Selvedge pattern: 32A
 Waste warp (%): 4
 Waste weft (%): 3
 Weaving shrinkage (%): 1.8
 Finishing shrinkage (%): 4
 Finishing weight change (%): 2

Density from technical data

Warp length	93.6 m	Name	Dobby Blanket		
Raw length	91.26 m	CAD filename	/home/toni/data/fabrics/big/DobbyBlanket		
Fabric length	87.75 m	Reed number	Reed width	Denting	Dents
Raw width	165 cm	2.8 / 1 cm	180.00 cm	4 5	504
Finished width	150 cm	Selvedge	2 x 3.57 cm		3 2 x 10
Warp threads	2268 + 2x32	Total	187.14 cm	524	
Density Warp	15.12 / 1 cm				
Density Weft (Loom)	12 / 1 cm				
Density Weft (Raw)	12.21 / 1 cm				
Density Weft (Finished)	12.7 / 1 cm				
Take-up	2.5%				
Waste warp	4%				
Waste weft	3%				
Weaving shrinkage	1.8%				
Finishing shrinkage	4%				
Finishing weight change	2%				
Consumption	84.56 kg				
Raw weight	863.7 g/m				
	523.4 g/m ²				
Finished weight	915.5 g/m				
	610.3 g/m ²				

Repeat	Weave	Design	Denting	Weave	Total
Warp	18	2268	9	2268	2268
10 Shafts	150.00 cm	2 Dents	150.00 cm	150.00 cm	150.00 cm
Weft	16	2016	1	2016	2016
1 advances	158.74 cm	1 advances	158.74 cm	158.74 cm	158.74 cm

Weft	Repeat threads	Count	Color
a	1002	200/1 tex	16-1320 Nouget
b	672	200/1 tex	11-4301 Lily White
c	252	200/1 tex	19-3933 Medieval Blue
d	90	200/1 tex	19-1763 Formula One
Total	2016		

Price

File One piece

Warping / m (\$) 0.02
 Sizing / kg (\$) 0
 Weaving / 1000 picks (\$) 0.6
 Darning raw / m (\$) 0.004
 Piece dyeing / kg (\$) 0
 Finishing / m (\$) 1.2
 Darning finished / m (\$) 0.002
 Transport / kg (\$) 0.2

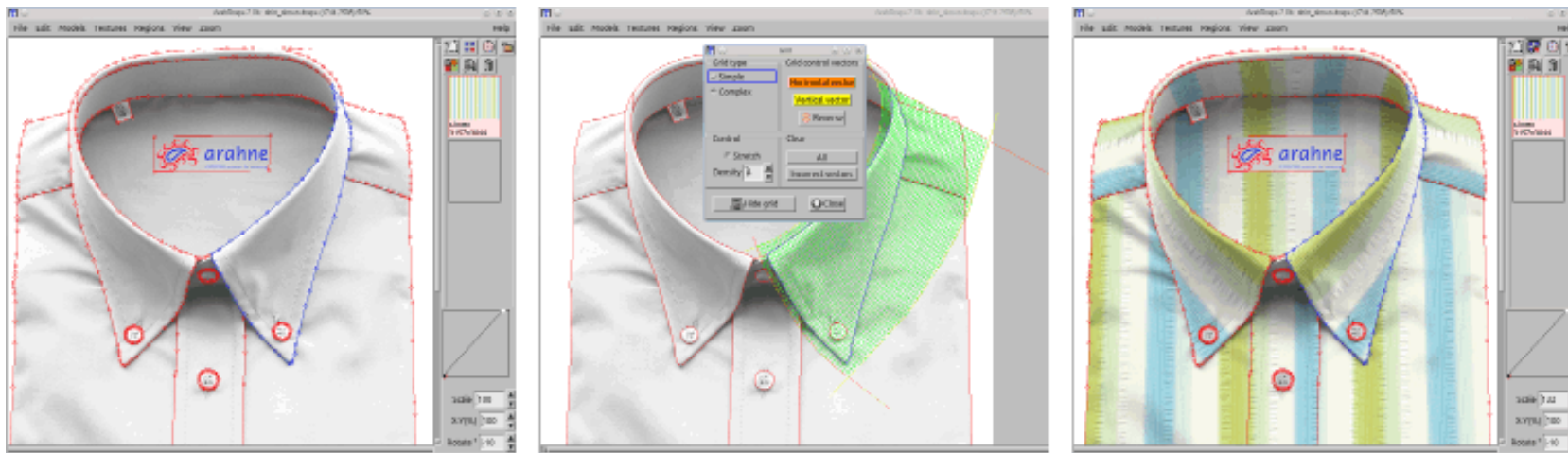
Pieces / m 0.7
 Tailoring / Piece (\$) 1.2
 Operating margin (%) 12.5
 Financing (%) 5
 Provisions (%) 10
 Commercial margin (%) 25

Cost	\$/m	Count	Color	\$/kg	g/m	\$/m
Warp	2.01326	A 2/52	19-3830 Astral Aura	15	33.1	0.49576
Weft	1.81502	Nm				
Yarn price	3.83					
Warping	0.02103	B 2/20	11-1306 Cream Pink	8	42.3	0.33824
Weaving	0.86100	Nm				
Darning raw	0.00410	C 2/20	15-1160 Blazing Orange	8	84.3	0.67465
Finishing	1.23000	Nm				
Darning finished	0.00200	D 2/20	18-1016 Cub	8	63.1	0.50462
Transport	0.07122	a 2/52	14-4307 Winter Sky	15	71.5	1.07186
Margin	52.5%	Nm				
Industrial cost		b 2/20	14-1045 Amber	8	92.9	0.74316
Raw	4.67	Nm				
Finished	6.02					
Price						
Raw	9.83					
Finished	12.67					

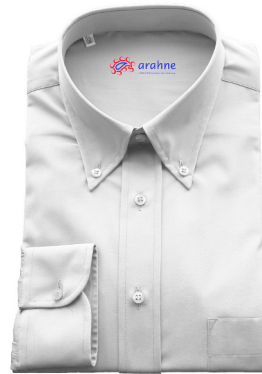
OK Close Help

ArahDrape – texture mapping

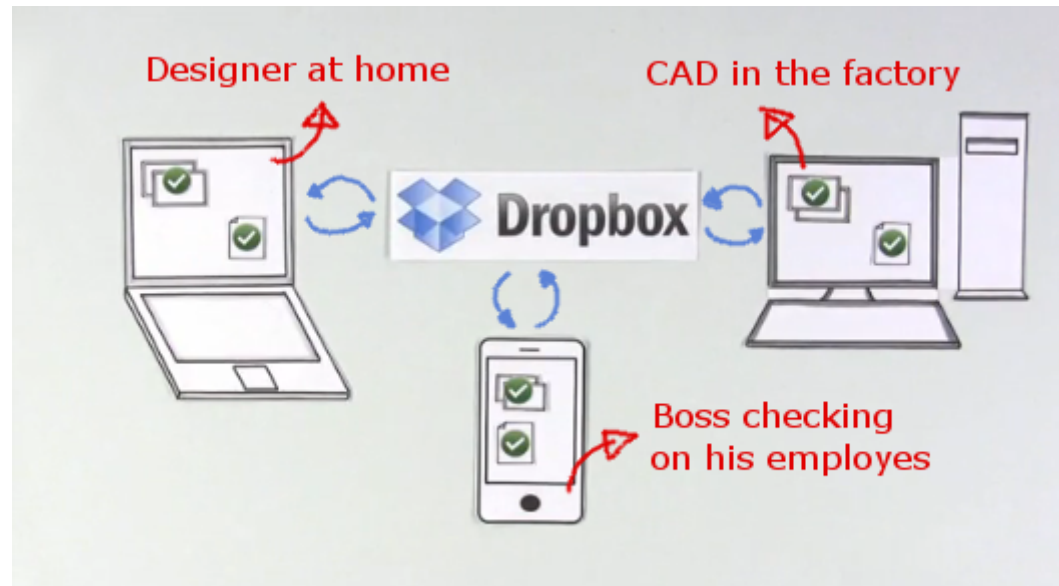
Apply patterns or textures on photos or sketches



Starting image and ArahDrape projects



Cloud computing with Dropbox



Save files on any device and they will be accessible on all devices and on Dropbox server

ArahView – Android tablet application

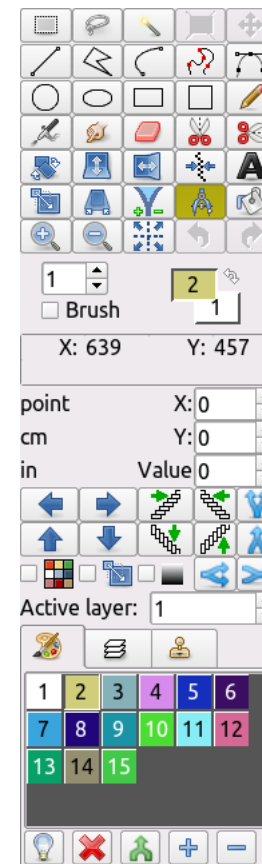
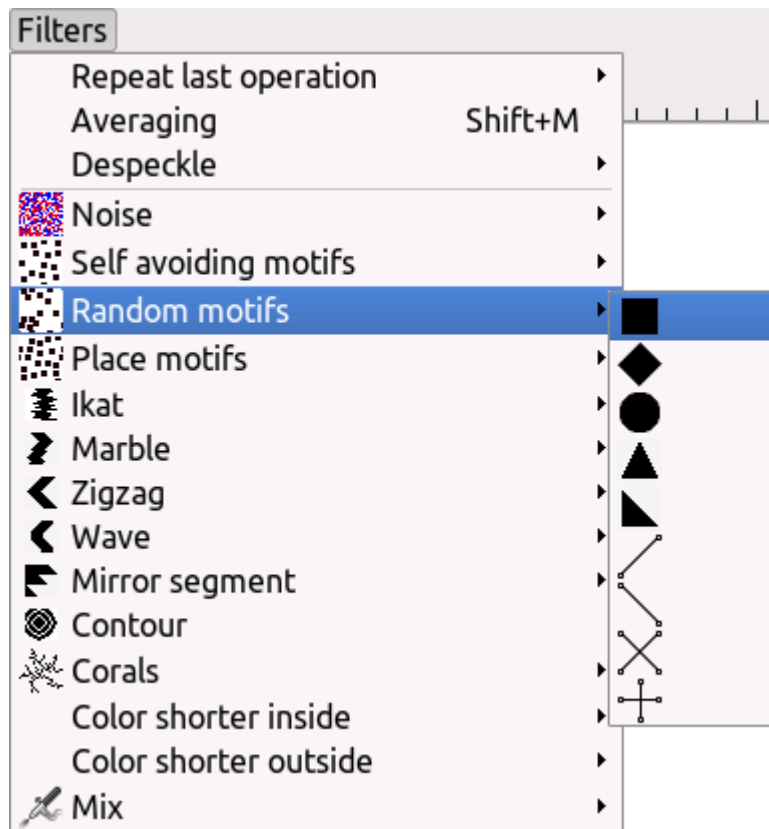


Browse cards, images and fabrics on your android tablet

Fast Pattern

Special filters in ArahPaint enable you to create seamless repeat images in a matter of seconds with just a few clicks.

The Fast Pattern collection of ready-made patterns, created with these filters, is available on our web site.



Fast Pattern

Fast Pattern



Fast Pattern

Fast Pattern

Fast Pattern

Arahne's references

Our customers are:

- Schools
- Weaving mills
- Design studios
- Hand weavers
- Converters

Partial list of schools:

- ISIS Varese (Italy)
- ITIS di Busto Arsizio (Italy)
- Tampere Polytechnic (Finland)
- Kunstuniversitat Linz (Austria)
- HTBLVA Spengergasse (Austria)
- University of Maribor (Slovenia)
- University of Ljubljana (Slovenia)
- National Institute of Design (India)
- Institute of Technology Delhi (India)
- Sir J.J. School of Art Mumbai (India)
- Hong Kong Polytechnic University (China)
- HAMK University of Applied Sciences (Finland)
- Academie beeldende kunsten Anderlecht (Belgium)
- Panipat Institute of Engineering and Technology (India)
- College of Engineering and Technology Bhubaneswar (India)

Arahne's industrial customers are located in:

- Argentina
- Australia
- Austria
- Belgium
- Bolivia
- Brazil
- Canada
- China
- Croatia
- Czech Republic
- Denmark
- Germany
- Egypt
- Finland
- France
- India
- Iran
- Italy
- Mexico
- Morocco
- Macedonia
- Mali
- New Zealand
- Poland
- Romania
- Russia
- Serbia
- Slovenia
- South Africa
- Spain
- Thailand
- Turkey
- UK
- USA